



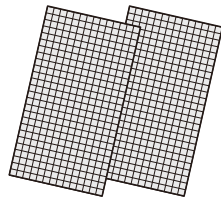
Easy to install with Velcro Tapes! Energy Saving / Heat Shield “Cool Up Heat Insulation”

Thank you for purchasing "Cool Up Heat Insulation".
Please read this "Instruction Manual" carefully and use it correctly.
Please keep this "Instruction Manual" in a safe place after reading it.

Contents

type	size	Cool Up Heat Insulation	Velcro Tape	
			Adhesive Surface	Pressing Surface
	100×200	2 pieces included	6 pieces ×4	6 pieces ×4

•Cool Up Heat Insulation



Type 200(100×200cm)
×2 pieces

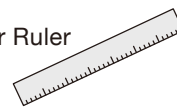
•Instruction Manual

•Velcro Tape



Adhesive Surface 6 pieces×4
Pressing Surface 6 pieces×4
(Recommended: 6 pieces per window)

•Paper Ruler



Handling Precautions

*The precautions given here are to prevent danger or damage to yourself or those around you.

Warning / Caution Be sure to check before installation.

- There is a caution that Wire Mesh glass or Low-E glass may be damaged due to interior usage.
- Please note that we cannot guarantee the thermal cracking of the glass if it is used in a manner that does not follow the instructions.
- Please do not use it in an extremely hot and humid place (bathrooms, etc.).
- Do not install in high places where a steady foothold cannot be secured.
Never lean over or work on the roof.
- If the glass is textured, the adhesive strength might be weakened. We recommend that you install it on a flat surface.
- Check in advance that the Velcro Tape does not get in the way when opening and closing (sliding) the sash.
- Do not attach to wooden frames. When peeling off the adhesive side of the Velcro Tape, the paint may come off.
- Do not leave the fabric folded or place heavy objects; it may cause wrinkles.
- Make the stainless steel coated surface (silver surface) to the sunlight side.
- In case of strong wind, please remove the fabric; it may come off.
- Press the Velcro Tape firmly to make sure that it does not come off.
- The Adhesive surface of the Velcro Tape cannot be reattached once it is attached and peeled off.
- The fabric is not fire-resistant, please be careful not to bring it close to fire (however, it will not ignite due to solar heat).

How to Take Care

- If the fabric gets dirty, wipe it gently with a dry rag (the fabric is also washable).
- Do not hit or rub the stainless steel coated surface (silver surface) against sharp objects.
- After the summer season is over, remove the fabric, dust it off, roll it up and store it for long-term use. Leave the Velcro Tape (Adhesive) attached to the window, while removing the fabric.
- When removing the adhesive glue, use a commercially available tape remover, plastic spatula, etc.

Precautions When Using the Washing Machine

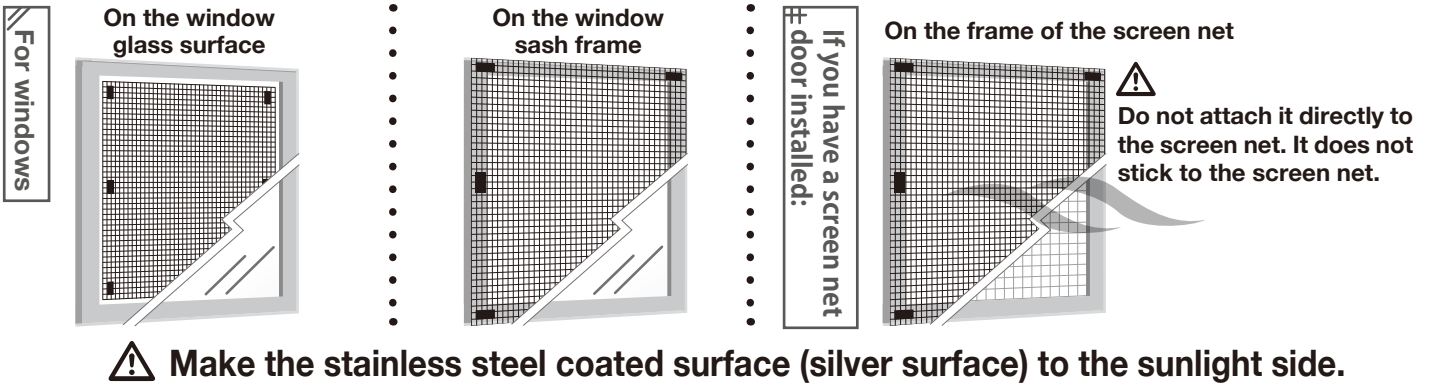
- Do not use alkaline detergents.
- Use a neutral detergent, wash in a warm water of 30 °C or less, and hang it in the shade to dry.
- While washing, please use the laundry net, fold the stainless steel coated surface (silver surface) inward, and do not wash the fabric with other laundries.
- Do not use bleach; it may cause discoloration.
- Please do not leave the fabric soaked for a long time; it may cause discoloration.
- Do not dry it in a tumbling machine; it will cause wrinkle.
- When ironing, apply a cloth in between and please iron only from the non-stainless steel coated surface (black surface) at a low temperature.



Use a neutral detergent.
Please use the laundry net.
Iron only from the non-stainless steel coated surface (black surface).

Installation Example

★ It can be attached to the glass surface, window sash frame, or screen door sash frame!



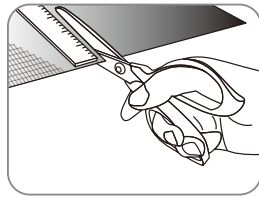
Installation Method

It can be installed easily in 4 steps!

STEP 1 Cut the fabric

Measure the size of the window (glass or sash frame), fix the attached ruler to the fabric with double-sided tape, and cut the fabric with scissors or a cutter.

⚠ Please be careful when using scissors and cutters.

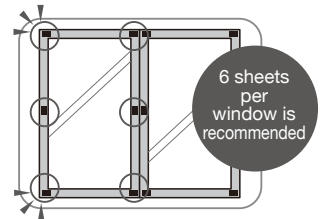


STEP 2 Attach the Velcro Tape (Adhesive)

Attach the Velcro Tape (Adhesive) to the mounting location.

*Before bonding, completely remove oil, moisture, dirt, etc. from the surface of the bonded part, and attach it firmly.

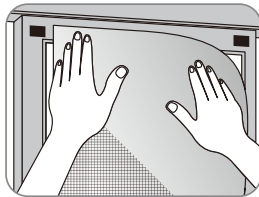
*Please use the Velcro Tape for reinforcement.



STEP 3 Attach the fabric

Fix it by pressing the fabric on the top of the Velcro Tape (Adhesive). Make sure that the Velcro Tape (Adhesive) is protruding from the mesh.

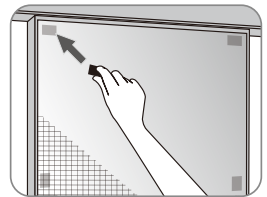
⚠ Place the stainless steel coating on the sunlight side and stretch it so that there is no wrinkle.



STEP 4 Sandwich the fabric with the other Velcro Tape (Pressing)

Attach the Velcro Tape (Pressing) from the top of the temporarily fixed mesh. Check the attachment with the Velcro Tape (Adhesive).

*Sandwich the fabric with the Velcro Tape.



Inquiries about products, installation methods, frequently asked questions,



You can also check our homepage
<http://sekisuinco.jp/coolup>



Installable Glass Type

— The heat shield effect is higher when it is attached to the exterior side of the window —

Single-Pane glass	exterior side ○ interior side ○	Wire Mesh glass	exterior side ○ interior side ✗
Multi-Pane glass	exterior side ○ interior side ○	Textured glass	No wires, smooth surface exterior side ○ interior side ○
Low-E glass	exterior side ○ interior side ✗		No wires, textured surface exterior side ✗* interior side ✗*

*It can be attached to the window sash frame and screen door frame.

FAQ

Q What should I do if the size of the window is not enough for the net?

A If you don't have enough fabrics, use multiple sheets for each window. You can cut the fabric to any size you want regardless of the length and width.

Q It says to remove and store it, but what can be removed?

A Remove the Velcro Tape (Pressing) and the fabric before storing. If you remove the Velcro Tape (Adhesive), you will not be able to reuse it, so leave it attached.

Q Although it is written "Heat Insulation Effect-11°C", does the temperature really go down?

A Test value of surface temperature of object exposed to sunlight through the window is -11°C, not room temperature.

Q The Velcro Tapes don't mesh well, what should I do?

A While sliding the Velcro Tape slightly up, down, left and right with your finger, press down the other Velcro Tape firmly.

Q Can the fabric be used for Wire Mesh glass / Low-E glass?

A We recommend to attach the fabric from the exterior side (there might be a risk of glass damage).

Quality Notation

Product name: Cool Up Heat Insulation
 Size: Type 200 ▶ 100×200cm
 Material: Polyester 100%
 Stainless (masa™ processing)
 Manufactured in Japan

SEKISUI

Sekisui Nano Coat Technology, Ltd.

<http://sekisuinco.jp/coolup/en/>

36 Hama-cho, Gamagori-city, Aichi Japan